

BUSCA UNA AMIGA O UN AMIGO

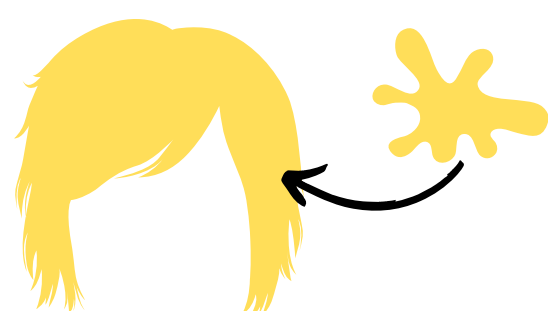
CON PANTALÓN CORTO

A large, empty rectangular box with a yellow border, intended for drawing a friend who wears shorts.

CON GAFAS

A large, empty rectangular box with a yellow border, intended for drawing a friend who wears glasses.

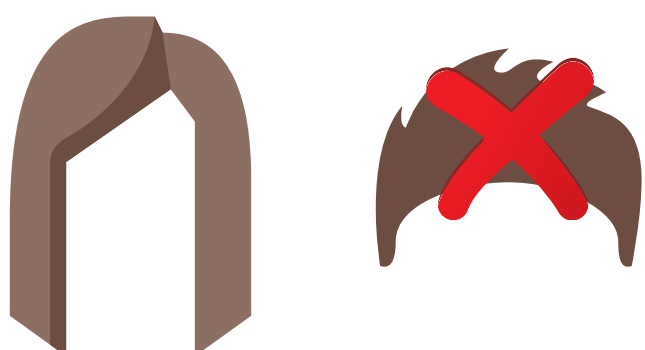
RUBIA/RUBIO

A large, empty rectangular box with a yellow border, intended for drawing a friend with blonde hair.

ALTA/ALTO

A large, empty rectangular box with a yellow border, intended for drawing a friend who is tall.

CON PELO LARGO

A large, empty rectangular box with a yellow border, intended for drawing a friend with long hair.

CON OJOS AZULES

A large, empty rectangular box with a yellow border, intended for drawing a friend with blue eyes.